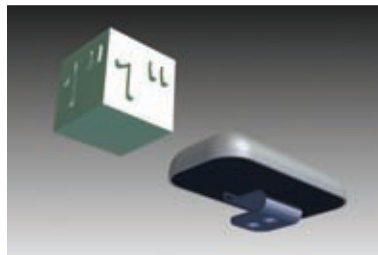


**Multiband Antennas** are the leading providers of cutting edge **IRIDIUM antenna solutions**.

As with our Orbcomm antenna solutions Multiband focuses on **small footprint, low profile** combination **antenna designs**. Our **Iridium** designs can be **off-the-shelf** or integrated into your hardware device. Listed below are **7 great products for 2010**



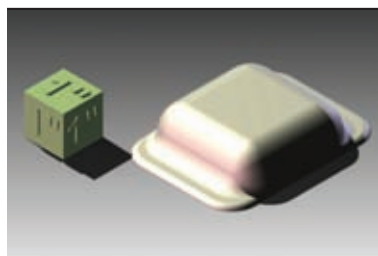
**BOOTLIP**



ELECTRICAL SPECIFICATION	IRIDIUM	GPS
Frequency Range	1616 - 1626.5MHz	1575 MHz
Nominal Gain (exl.cable)	4 dB max	20 dB
Max. Axial Ratio	-	4 dB
VSWR	Tx< 2:1	< 2 :1
Rated power	10W	1 W
Polarisation	RCHP	RHCP
Voltage	-	3-5 V
Isolation/Decoupling	10dB	10dB

**MECHANICAL DATA** Temp: -40°C to +85°C, outside this range antenna performance can be expected to degrade, Performance: The Patch based antenna is designed to be clipped onto the hood or trunk of vehicle, mechanically held in place by 2 grub screws hidden from view and with the cables passing directly through to the inside of the trunk or engine compartment. This antenna is a great alternative to using a magmount in that it mechanically attaches the antenna without having to drill any holes. The antenna as standard comes with 2 short RG174 pigtails. The antenna is not regarded as groundplane dependent and a groundplane of 70mm x 70mm is recommended. Cable and connector options available - standard 30cm SMA male/SMA male. Dimensions - L70mm x W35 x H20mm.

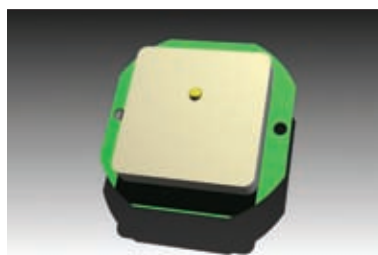
**BLIP**



ELECTRICAL SPECIFICATION	IRIDIUM	GPS	GSM (optional)
Frequency Range	1616 - 1626.5MHz	1575 MHz	824-960MHz 1710-1990MHz
Nominal Gain (exl.cable)	1 dB max	15 dBi	2.2 dBi
Max. Axial Ratio	-	4 dB	-
VSWR	Tx< 2:1	< 2 :1	Tx< 2:1
Rated power	10W	1 W	10 W
Polarisation	RCHP	RHCP	Linear
Voltage	-	3-5 V	-
Isolation/Decoupling	10dB	10dB	10dB

**MECHANICAL DATA** Temp: -40°C to +85°C, outside this range antenna performance can be expected to degrade, Performance: This single patch based antenna is designed to be installed on a flat surface/vehicle roof within 4-6 metres of the modem and use LMR 240 jumper cables. The antenna comes with a short Iridium pigtail as standard and 30cm RG174 GSM and GPS cables. The antenna is groundplane dependent so can be installed on metal or plastic. The cables can be side entry or bottom entry as the base section has been potted with waterproof resin. Cable and connector options available. Dimensions - L120mm x W80mm x H25mm.

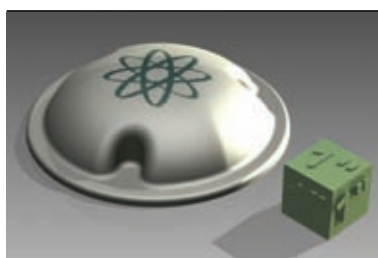
**OEM IR 2**



ELECTRICAL SPECIFICATION	IRIDIUM	GPS	GSM (optional)
Frequency Range	1616 - 1626.5MHz	1575 MHz	824-960MHz 1710-1990MHz
Nominal Gain (exl.cable)	1 dB max	15 dBi	2.2 dBi
Max. Axial Ratio	-	4 dB	-
VSWR	Tx< 2:1	< 2 :1	Tx< 2:1
Rated power	10W	1 W	10 W
Polarisation	RCHP	RHCP	Linear
Voltage	-	3-5 V	-
Isolation/Decoupling	10dB	10dB	10dB

**MECHANICAL DATA** Temp: -40°C to +85°C, outside this range antenna performance can be expected to degrade, Performance: This patch based antenna is designed to be installed on a water protected flat surface/windscreen within 4-6 metres of the modem and use LMR 240 jumper cables. The antenna as standard comes with 2 short RG174 pigtails. The antenna is not regarded as fully groundplane dependent but will work well on plastic or glass. Cable and connector options available - standard 30cm SMA male/SMA male. Dimensions - D70 x H15mm.

**MINI FLATBOOK**



ELECTRICAL SPECIFICATION	IRIDIUM	GPS	GSM (optional)
Frequency Range	1616 - 1626.5MHz	1575 MHz	824-960MHz 1710-1990MHz
Nominal Gain (exl.cable)	1 dB max	15 dBi	2.2 dBi
Max. Axial Ratio	-	4 dB	-
VSWR	Tx< 2:1	< 2 :1	Tx< 2:1
Rated power	10W	1 W	10 W
Polarisation	RCHP	RHCP	Linear
Voltage	-	3-5 V	-
Isolation/Decoupling	10dB	10dB	10dB

**MECHANICAL DATA** Temp: -40°C to +85°C, outside this range antenna performance can be expected to degrade, Performance: This single patch based antenna is designed to be installed on a flat surface/vehicle roof within 4-6 metres of the modem and use LMR 240 jumper cables. The antenna comes with a short Iridium pigtail as standard and 4m RG174 GSM and GPS cables. The antenna is groundplane dependent so can be installed on metal or plastic. The mounting surface requires an 18-19mm drill hole. Cable and connector options available. Dimensions - D110mm x H30mm.

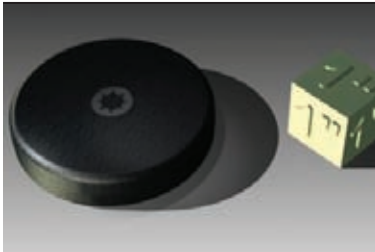
OEM IR 4



ELECTRICAL SPECIFICATION	IRIDIUM	GPS	GSM (optional)	WIFI
Frequency Range	1616 - 1626.5MHz	1575 MHz	824-960MHz 1710-1990MHz	2-4 GHz
Nominal Gain (exl.cable)	1 dB max	20 dBi	2.2 dBi	0 dB
Max. Axial Ratio	-	4 dB	-	-
VSWR	Tx< 2:1	< 2 :1	Tx< 2:1	<2:1
Rated power	10W	1 W	10 W	10W
Polarisation	RCHP	RHCP	Linear	Linear
Voltage	-	3-5 V	-	-
Isolation/Decoupling	10dB	10dB	10dB	10dB

MECHANICAL DATA Temp: -40°C to +85°C, outside this range antenna performance can be expected to degrade, Performance: Performance is dependent on the final size of the PCB and tuning. The suggested minimum groundplane is 70mm x 70mm but data applications will work on less. The small footprint (note - 1 patch for both GPS and Iridium) gives application developers the chance to develop integrated products including adding it as part of the build to their main board. This product is not sold as an off-the-shelf product. Cable and connector options available  
Dimensions - L100mm x W60mm x H10mm

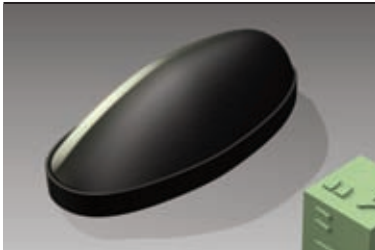
MICA IR



ELECTRICAL SPECIFICATION	IRIDIUM	GPS
Frequency Range	1616 - 1626.5MHz	1575 MHz
Nominal Gain (exl.cable)	4 dB max	20 dB
Max. Axial Ratio	-	4 dB
VSWR	Tx< 2:1	< 2 :1
Rated power	10W	1 W
Polarisation	RCHP	RHCP
Voltage	-	3-5 V
Isolation/Decoupling	10dB	10dB

MECHANICAL DATA Temp: -40°C to +85°C, outside this range antenna performance can be expected to degrade, Performance: This patch based antenna is designed to be installed on a flat surface/vehicle roof within 4-6 metres of the modem and use LMR 240 jumper cables. The antenna as standard comes with 2 short RG174 pigtailed. The antenna is not regarded as groundplane dependent and a groundplane of 70mm x 70mm is recommended. The mounting surface requires an 18-19mm drill hole. Cable and connector options available - standard 30cm SMA male/SMA male.  
Dimensions - D70 x H15mm.

VENUS IR



ELECTRICAL SPECIFICATION	IRIDIUM	GPS
Frequency Range	1616 - 1626.5MHz	1575 MHz
Nominal Gain (exl.cable)	1 dB max	15 dBi
Max. Axial Ratio	-	4 dB
VSWR	Tx< 2:1	< 2 :1
Rated power	10W	1 W
Polarisation	RCHP	RHCP
Voltage	-	3-5 V
Isolation/Decoupling	10dB	10dB

MECHANICAL DATA Temp: -40°C to +85°C, outside this range antenna performance can be expected to degrade, Performance: This patch based antenna is designed to be installed on a flat surface/vehicle roof within 4-6 metres of the modem and use LMR 240 jumper cables. The antenna as standard comes with 2 short RG174 pigtailed. The antenna is not regarded as groundplane dependent and a groundplane of 70mm x 70mm is recommended. The mounting surface requires an 18-19mm drill hole. Cable and connector options available - standard 30cm SMA male/SMA male.  
Dimensions - L110mm x W55 x H35mm.

Partners |

