



MultiTrack ONE

Engine Hours via Satellite to your Desktop



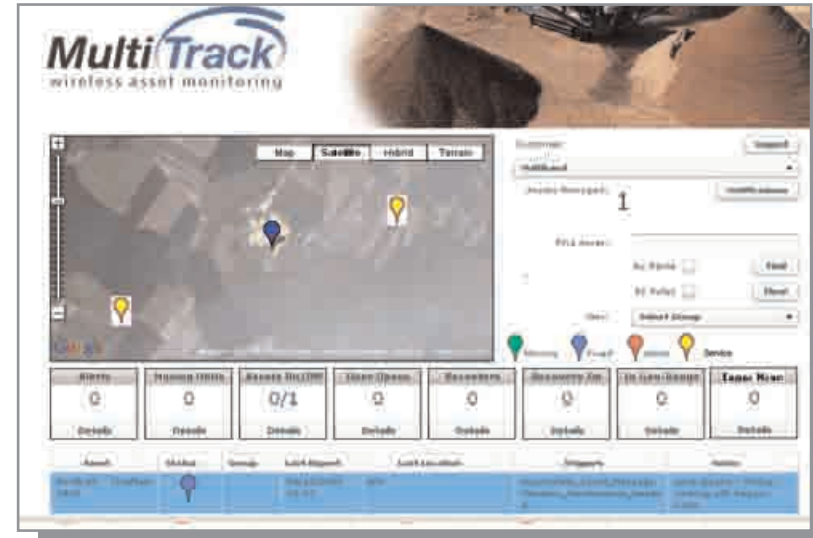
What is MultiTrack ONE?



• **What is Multitrack ONE?**

- Multitrack ONE is a **low cost** engine hour monitoring application that uses satellite to transmit hours and **GPS position** from machines and assets working in urban, rural and isolated locations
- The application is designed for **service managers** who want to **maximise sales** of service and spare parts.
- The **satellite modem** is programmed to send GPS position reports **daily** and an engine hour report every 10 hours of engine run time.
- Messages are sent and received in **real-time** via satellite.
- Once the message has been received by the Multitrack BackOffice servers an alert is triggered if the **engine hours** reaches a threshold value (250 hours for instance).
- The alert automatically triggers an **email or SMS** to the service manager and appears as a red icon on the on-line map. The icon remains red until the service manager has reset the threshold and recorded the service date.
- The service manager can filter all machines in a state of alert (due service)

* Planned - service vehicles will be identified by a yellow icon allowing the service manager to quickly locate the nearest service vehicle to a machine in a state of alert.



• Hardware Benefits

- Low Cost Hardware
- Low Cost Messaging
- Satellite based

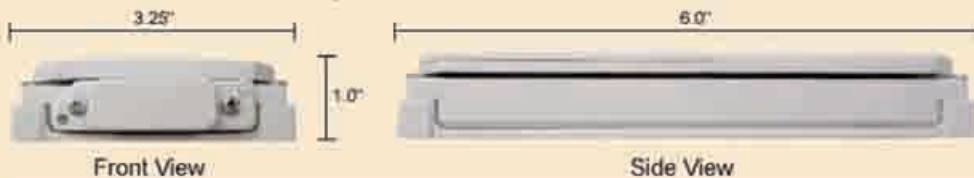
- 1 Minute Installation

- No wiring or cabling needed
- Up to 4 years battery life
- Very small form factor

• Software Benefits

- Multi-access, password protected Web application
- Very easy to navigate
- No need for multi-lingual versions
- Great business tool to stimulate service based sales
- No cumbersome data entry - look, see, act, re-act

SMARTONE IP68 Enclosure Specifications:

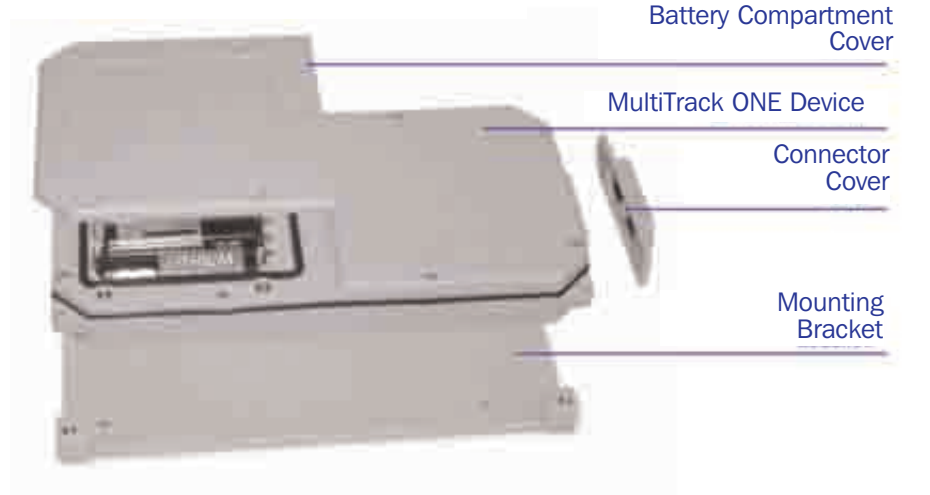


System Architecture



MultiTrack ONE Hardware

MultiTrack ONE Device



For more information contact
Michael Kenny
mkenny@multiband-antennas.com
+48 604 675 649